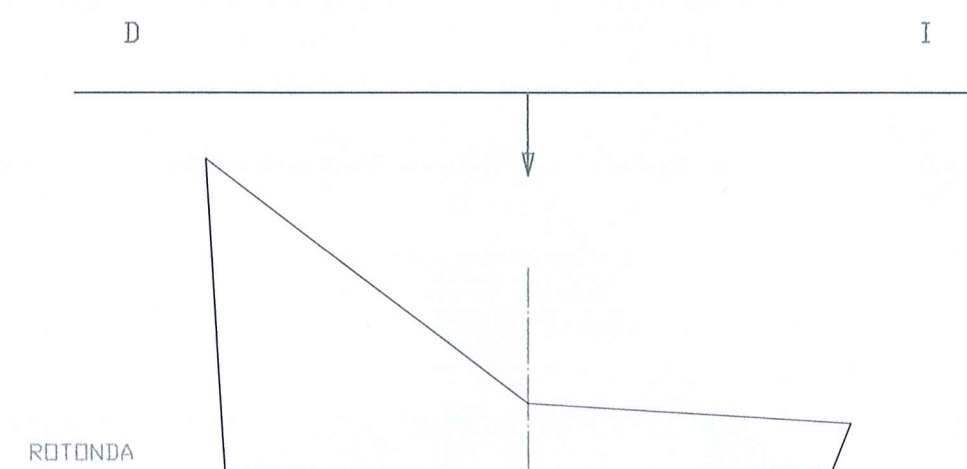
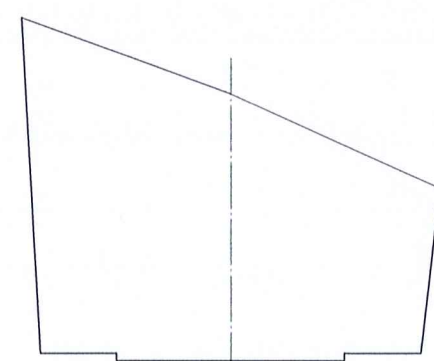


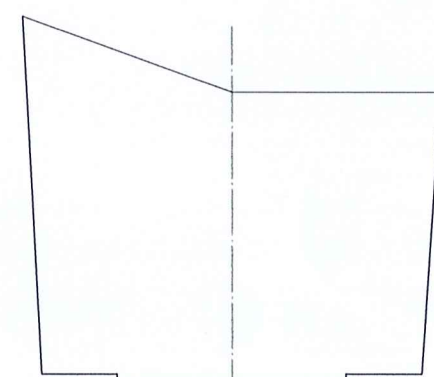
PERFILES TRANSVERSALES VIAL -C-



PERFIL Nº 1
CR= 23.533
CT= 25.523



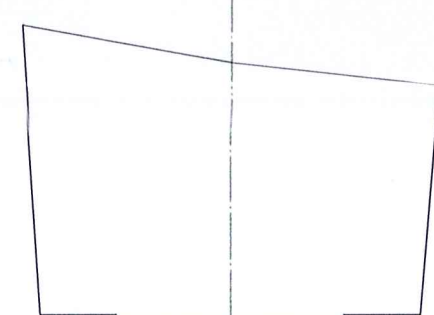
PERFIL Nº 2
CR= 24.433
CT= 31.492



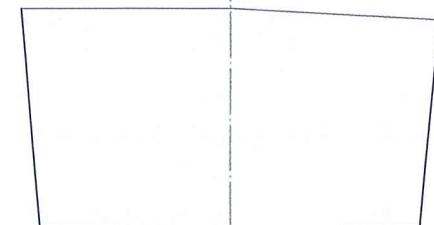
PERFIL Nº 3
CR= 25.333
CT= 33.000



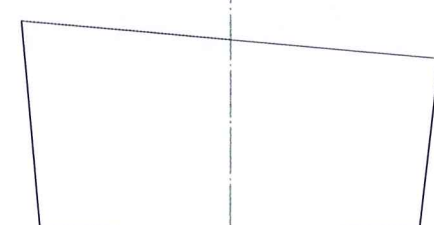
PERFIL Nº 4
CR= 26.233
CT= 33.000



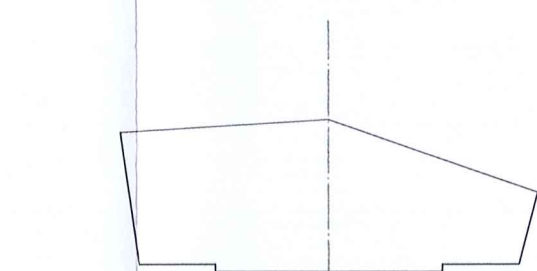
PERFIL Nº 5
CR= 27.133
CT= 34.000



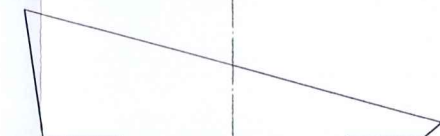
PERFIL Nº 6
CR= 28.017
CT= 34.000



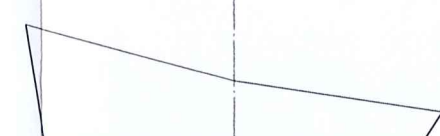
PERFIL Nº 7
CR= 28.779
CT= 34.000



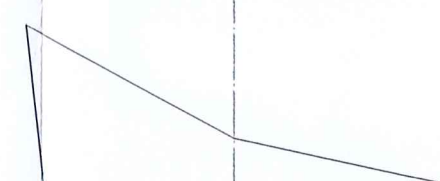
PERFIL Nº 8
CR= 29.397
CT= 33.426



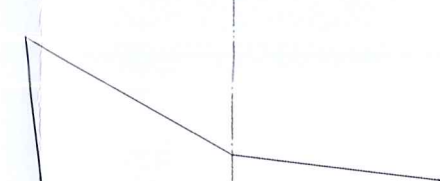
PERFIL Nº 9
CR= 29.873
CT= 32.021



PERFIL Nº 10
CR= 30.205
CT= 32.000



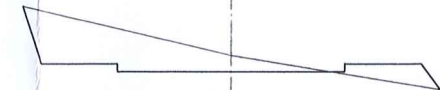
PERFIL Nº 11
CR= 30.395
CT= 32.000



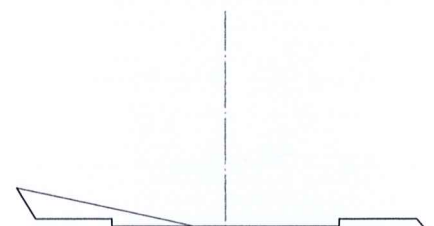
PERFIL Nº 12
CR= 30.442
CT= 31.682



PERFIL Nº 13
CR= 30.367
CT= 31.251



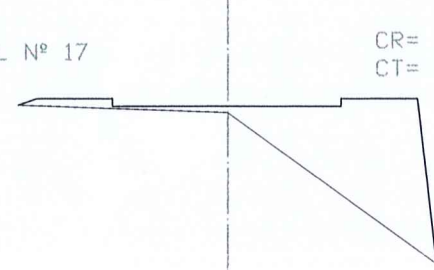
PERFIL Nº 14
CR= 30.275
CT= 30.708



PERFIL Nº 15
CR= 30.183
CT= 30.007



PERFIL Nº 16
CR= 30.107
CT= 30.000



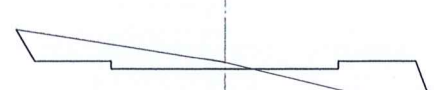
PERFIL Nº 17
CR= 30.170
CT= 30.000



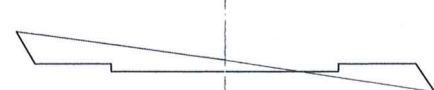
PERFIL Nº 18
CR= 30.400
CT= 30.000



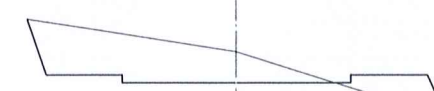
PERFIL Nº 19
CR= 30.769
CT= 30.623



PERFIL Nº 20
CR= 31.154
CT= 31.328



PERFIL Nº 21
CR= 31.538
CT= 31.841



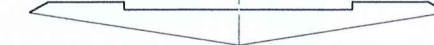
PERFIL Nº 22
CR= 31.923
CT= 32.748



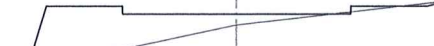
PERFIL Nº 23
CR= 32.308
CT= 33.000



PERFIL Nº 24
CR= 32.692
CT= 31.980



PERFIL Nº 25
CR= 33.077
CT= 32.139



PERFIL Nº 26
CR= 33.462
CT= 33.172



PERFIL Nº 27
CR= 33.846
CT= 35.233



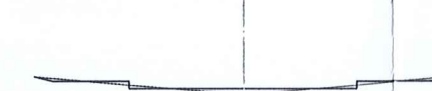
PERFIL Nº 28
CR= 34.231
CT= 37.000



PERFIL Nº 29
CR= 34.615
CT= 37.000



PERFIL Nº 30
CR= 35.000
CT= 37.000



PERFIL Nº 31
CR= 35.678
CT= 35.509



PERFIL Nº 32
CR= 36.355
CT= 32.000



PERFIL Nº 33
CR= 37.033
CT= 32.099

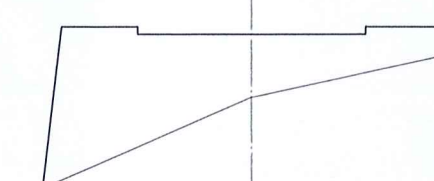


PERFIL Nº 34
CR= 37.710
CT= 32.845

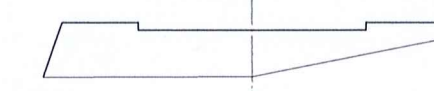


PERFIL Nº 35
CR= 38.388
CT= 35.462

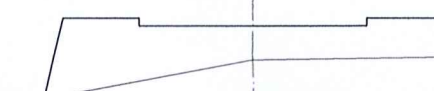
PERFIL Nº 36
CR= 39.066
CT= 37.401



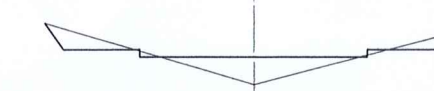
PERFIL Nº 37
CR= 39.743
CT= 38.516



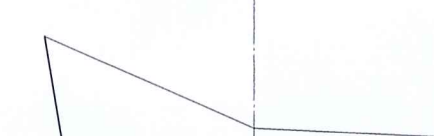
PERFIL Nº 38
CR= 40.421
CT= 39.522



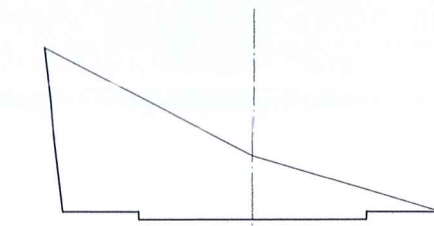
PERFIL Nº 39
CR= 41.098
CT= 40.373



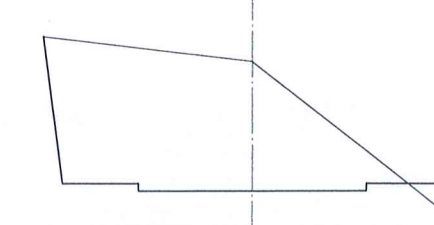
PERFIL Nº 40
CR= 41.776
CT= 40.992



PERFIL Nº 41
CR= 42.454
CT= 44.145



PERFIL Nº 42
CR= 42.915
CT= 46.351



RE: 27274/02

Francisco Moreno Jiménez
Colegio Nacional de Ingenieros del C.A.I.
Papeo 207.400.00
PLANOS

Ingeniería
C/ Margarita, 65
local 2, bloque 3
29649 Mijas-Costa
MALAGA
Tl: 952 58 23 23
g7ingenieria@g7ingenieria.com

PROYECTO DE URBANIZACION DE LA UNIDAD DE EJECUCION C-17 DE MIJAS (MALAGA)	
PETICIONARIO: APEX 2000 S.A.U.	
PLANO DE:	REF 021102
PERFILES TRANSVERSALES VIAL C	FECHA NOV 2002
Francisco Moreno Jiménez	ESCALA: 1/200
Ingeniero Industrial	SUST.
	PLANO Nº 11